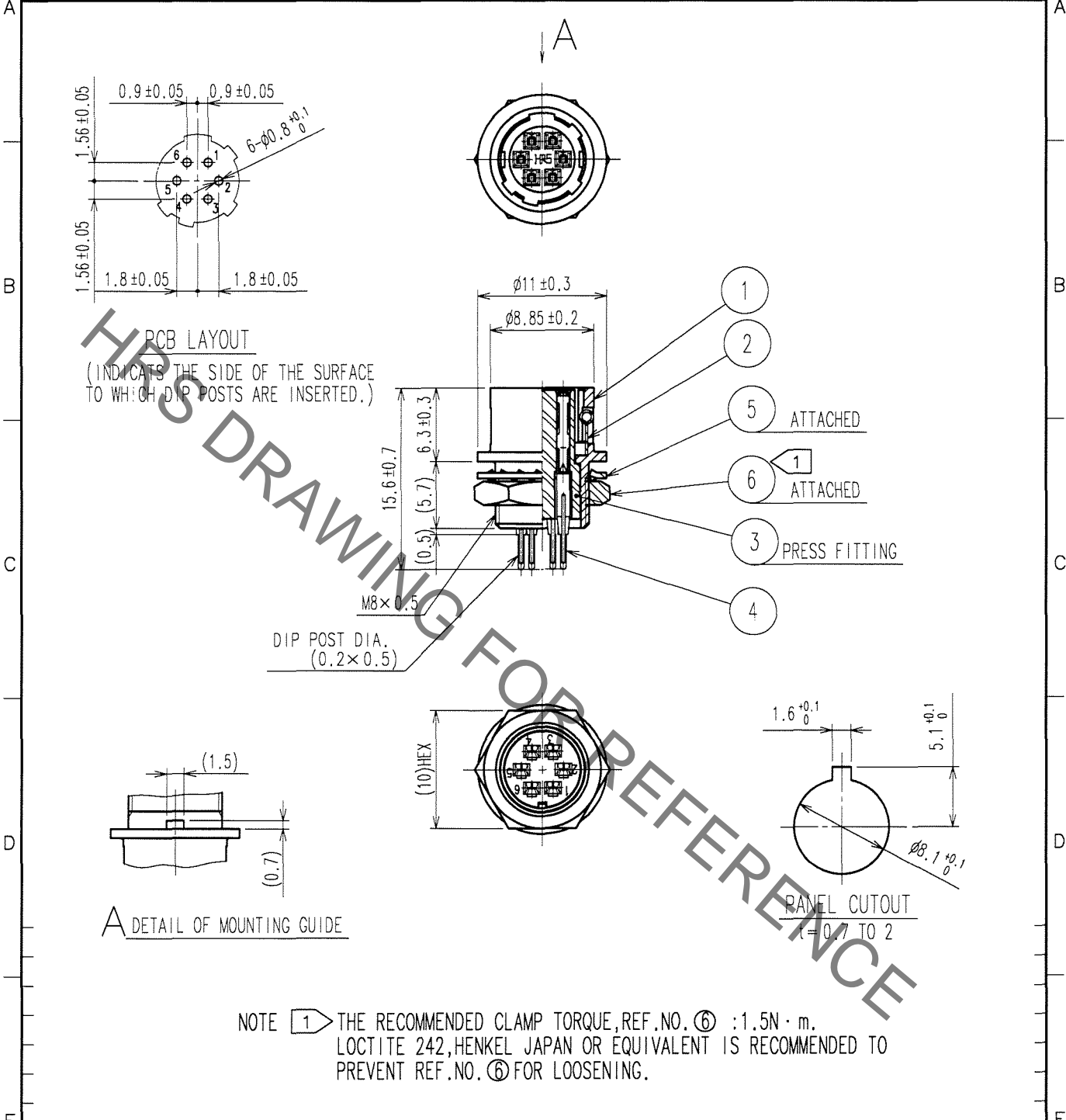


Aug.1.2021 Copyright 2021 HIROSE ELECTRIC CO., LTD. All Rights Reserved.
 In case of consideration for using Automotive equipment / device which demand high reliability, kindly contact our sales window correspondents.

1		2		3		4			
COUNT	DESCRIPTION OF REVISIONS	BY	CHKD	DATE	COUNT	DESCRIPTION OF REVISIONS	BY	CHKD	DATE
△					△				
△					△				
△					△				



NO.	MATERIAL	FINISH, REMARKS	NO.	MATERIAL	FINISH, REMARKS
3	POLYBUTYLENE TEREPHTHALATE	(BLACK) UL94V-0	6	BRASS	NICKEL PLATING
2	STAINLESS STEEL		5	PHOSPHOR BRONZE	NICKEL PLATING
1	ZINC ALLOY	MATTE FINISH NICKLE PLATED	4	PHOSPHOR BRONZE	SILVER PLATING 2μ m min.

CODE NO. (OLD) CL	DRAWN <i>M. Sato</i> 07.07.06	DESIGNED <i>T. Horii</i> 07.03.06	CHECKED <i>E. Kunii</i> 07.03.08	APPROVED <i>M. Sato</i> 07.03.08	RELEASED
----------------------	-------------------------------------	---	--	--	----------

 SCALE 2 : 1 UNITS mm	DRAWING NO. EDC4-022529-73 HIROSE ELECTRIC CO., LTD.	PART NO. HR10A-7R-6SB(73) CODE NO. CL110-0316-0-73	1 1
-----------------------------------	--	---	--------